

## STANDARD COST ROLL

### BOUGHT-OUT ITEMS

Run Material Burden UBE which creates X2 record

New pur standard loaded as 08 in F4105 cost ledger

### MANUFACTURED ITEMS

BILL OF MATERIALS:  
COMP QTY,  
BATCH

---

ROUTING:  
M TYPE, HOURS,  
BATCH  
QUANTITY

Simulate R30812

Review Simulate output

Freeze PROOF mode

Freeze FINAL mode



Purchased inventory

### BOUGHT-OUT ITEMS

07 std Updated From 08 In cost ledger

Inventory revalued

### MFG ITEMS

All FG item simulated, frozen and cost ledger values same

---

07 std Updated In cost ledger



FG inventory



DC inventory

Inventory update

07 std Updated In cost ledger

Ensure you are using 08 as purchasing std in processing option

Review inventory net impact from report R30835 R30834

Review reports R30835 R30834 R30837 post GL batches

Non-mfg branches

Copy Simulated costs to DCs

Freeze FINAL mode

Inventory update

#### Important notes:

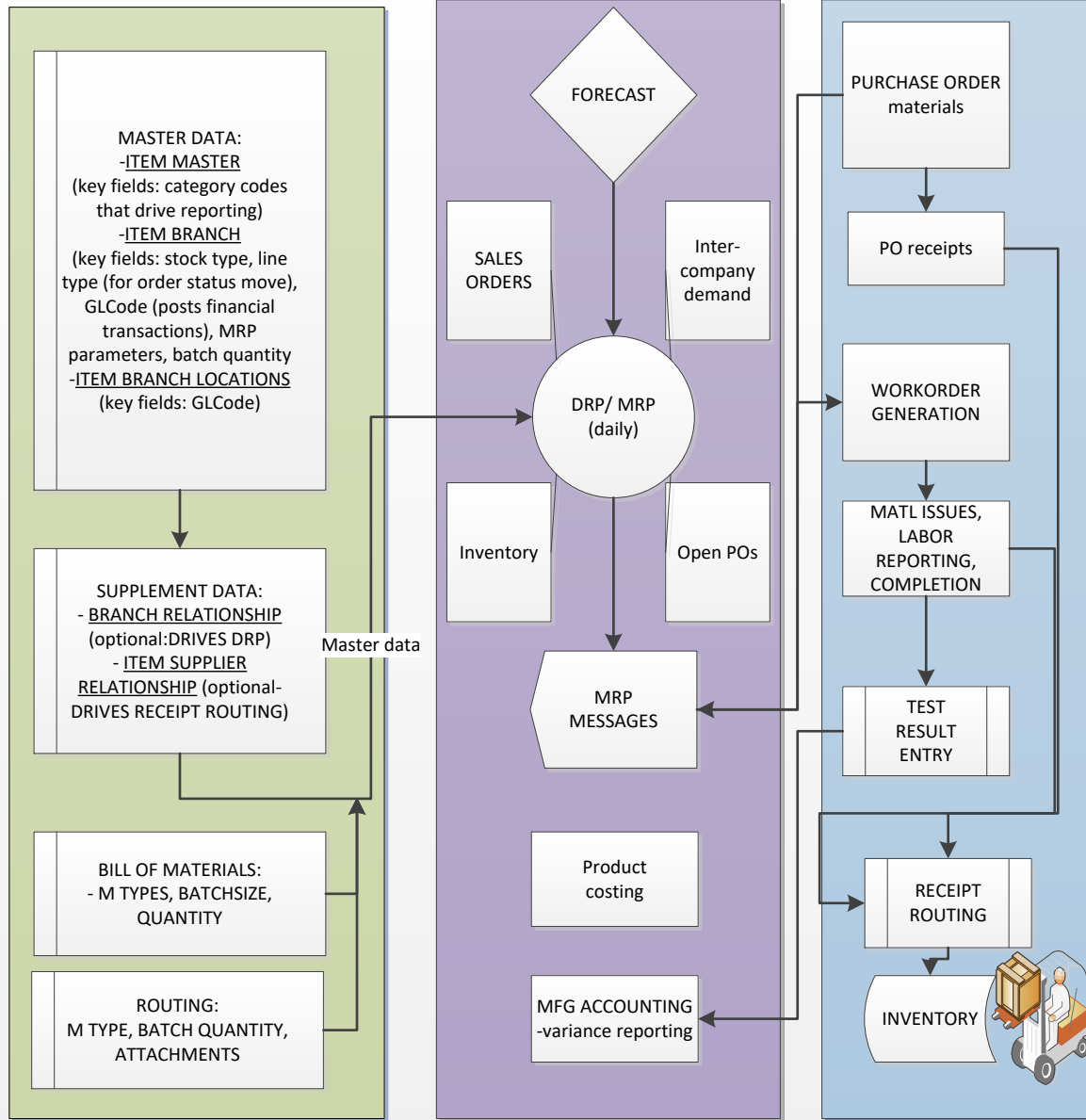
- JDE prefers cost freeze happens when there are no major activity in the system. Why? Cost freeze and cost ledger update takes time; when user is receiving item (PO/ST receipt) system will error that no std exist. There could WO related impact as well. Sales order entered/shipping during that time frame will have different costs.
- for audit. Beside the std roll reports, you can run bom data and routing data reports from your menu. This is the data evidence on cost calculations. For reference purposes. You can copy existing costs (07) into new method for reports. System does NOT store past cost calculation details (other than static reports)
- Always use Enter/Change cost components to get the breakups of A1, B1, X2 costs (P30026/F30026 table). You will get TOTAL cost in P4105/F4105 table.

# E1 MANUFACTURING FLOW

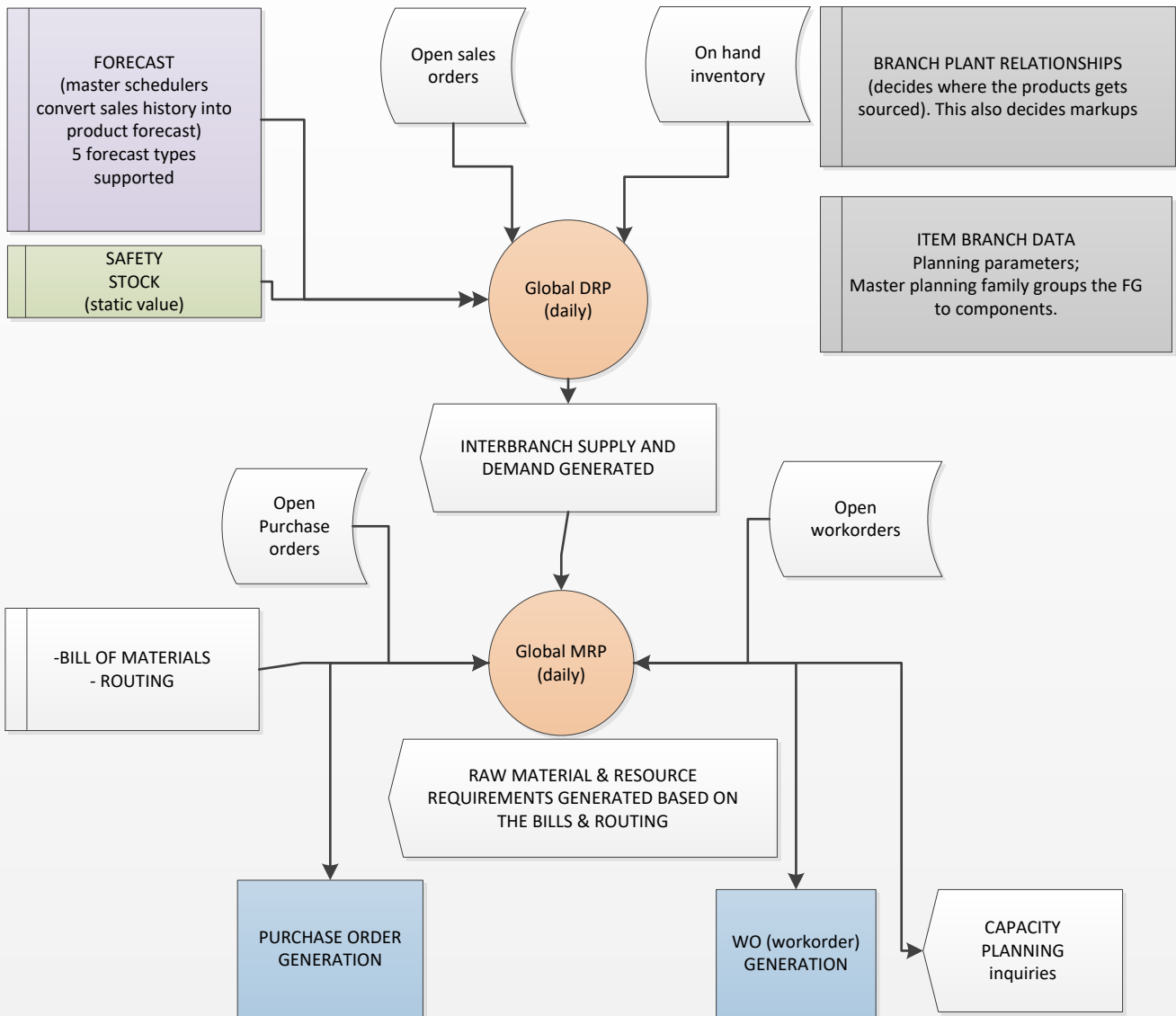
## ENGINEERING

## PLANNING

## OPERATIONS



## DRP-MRP JDE FUNCTIONALITY



Gross Regeneration happens every day morning 4:00AM CST (provisional) and  
DRP/MRP planning messages are loaded into the tables.  
This is a JDE batch (scheduler) process and not real-time.  
Planners need to log-in and review their messages

# WORKORDER PROCESSING STEPS

